

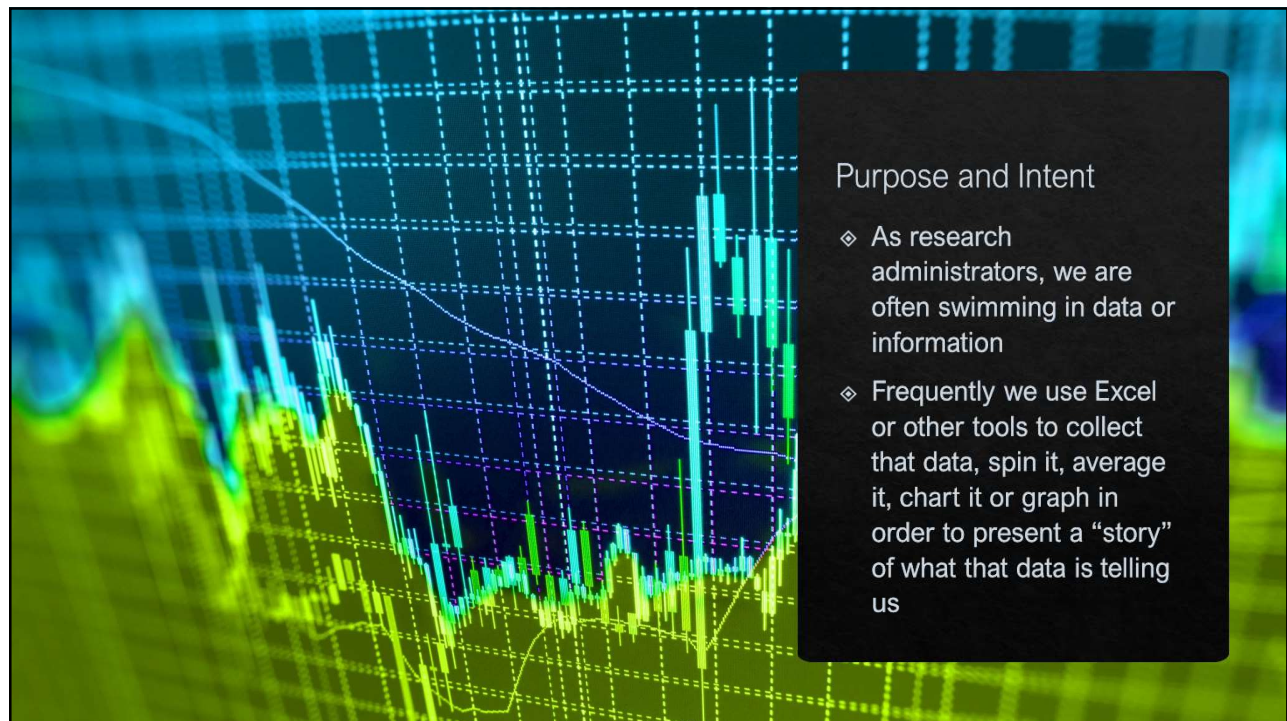
1



2



3



4

Common Visualizations

- ◆ Trend Data
- ◆ Comparative Data
- ◆ Totals (or measures of central tendency)
 - ◆ Average, Min, Max
- ◆ Timelines
- ◆ Progress Towards a Goal



5

Refresher

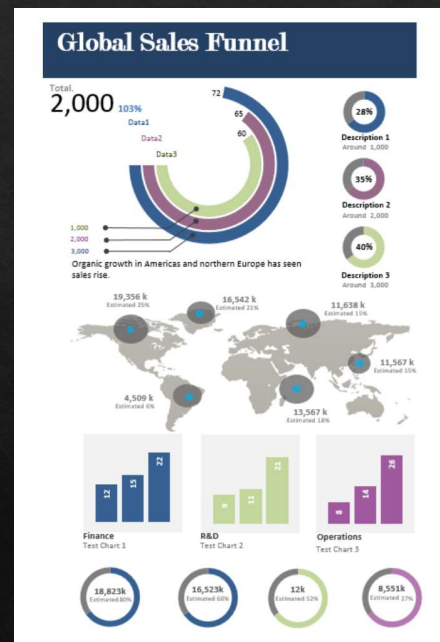
- ◆ Formatting spreadsheets
- ◆ Quick shortcuts/keyboard tricks
- ◆ Look back at Session 1 and 2 for quick tips and refreshers
- ◆ Pivot tables
- ◆ Charting and Graphing
- ◆ Data Analyses

6

Infographics

- ◆ They are graphic visual representations of information
- ◆ Intended to present data clearly and quickly

<https://www.thesmallman.com/infographics>



7

Effective Excel Tools

- ◆ Excel has clearly demonstrated itself to be a powerful tool for analyzing data
- ◆ How can it help us convert that analysis into a story-telling visualization
- ◆ There are many sources online for pre-formatted infographics and dashboarding tools
- ◆ Microsoft has a series of embedded templates in both Excel and PowerPoint to serve as nice infographic tools – check out these templates:
- ◆ <https://templates.office.com/en-us/collection-data-infographics-templates-small-business>

8

Online Resources

- ◆ <https://templates.office.com/en-us/collection-data-infographics-templates-small-business>
- ◆ <https://www.myonlinetraininghub.com/excel-infographics>
- ◆ <https://chandoo.org/wp/category/visualization/>
- ◆ <https://www.analyticsvidhya.com/blog/2020/06/3-advanced-excel-charts-every-analytics-professional-should-try/>
- ◆ <https://trumpexcel.com/advanced-charts/>
- ◆ <https://www.exceltip.com/excel-chart/10-creative-advanced-excel-charts-to-rock-your-dashboard.html>
- ◆ <https://excelchamps.com/blog/advanced-charts/>


9

Today's Class



- ◆ We are going to go through 1 fairly intense data exercise, and produce a TORNADO Chart using UFIRST Awards Data
- ◆ We will demo a preformatted visualization tool to assist in Project Management – whether its Pre- or Post-Award this MILESTONE Chart will impress
- ◆ Most of our Research Administration world is governed by funding, and for our PI's that means "targets". We will go over a preformatted tool to illustrate percent achieved towards a target.


10



TORNADO CHART

- ◆ For this lesson we will use:
 - ◆ TORNADO Chart Data.xls
 - ◆ TORNADO Chart Manual.pdf


11



MILESTONE CHART

- ◆ For this lesson we will use:
 - ◆ MILESTONE Chart Template.xls
 - ◆ MILESTONE Chart manual.pdf

12



THERMOMETER CHART

- ◆ For this lesson we will use:
 - ◆ THERMOMETER Chart Template.xls
 - ◆ THERMOMETER Chart manual.pdf

13

Any Questions

Brian Sevier, PhD
bjse@ufl.edu

14